

**320454 (20)**

BE (4<sup>th</sup> Semester)

Examination, Nov-Dec 2021

Branch : Civil

**CIVIL ENGINEERING DRAWING (NEW)**

*Time Allowed : Four Hours*

*Maximum Marks : 80*

*Minimum Pass Marks : 28*

**Note :** (i) Attempt all questions. All questions carry equal marks. Part (a) is compulsory and attempt any two parts from rest.

(ii) Assume suitable dimensions wherever required. Adopt suitable scale.

(2)

Unit-I

Q. 1. (a) What do you understand by grouping. 2

(b) Write short notes on : 7

(i) Aspects

(ii) Prospects

(iii) Furniture requirements

(iv) Privacy

(c) Explain the following : 7

(i) Circulation

(ii) Sanitation

(iii) Economy

(iv) Roominess

320454 (20)

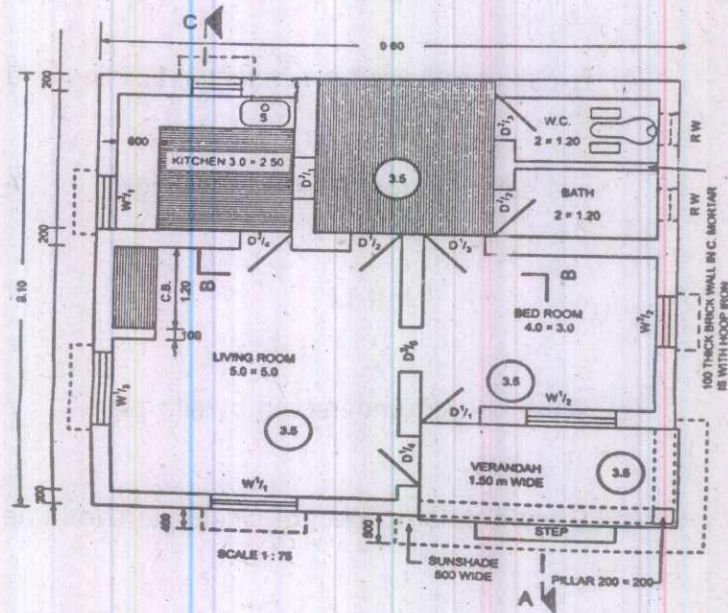
(3)

- (d) Explain by- laws for residential building and site selection for industrial building. 7

**Unit-II**

- Q. 2.** (a) What do you understand by site plan ? 2
- (b) Draw a detailed plan of single storeyed one room building having front verandah and draw its site plan also. 7
- (c) Draw a detail plan of single storeyed one bed room building. 7
- (d) Draw a detail plan of single storeyed two bed room residential building. 7

(4)



PLAN

Figure-1

Unit-III

- Q. 3. (a) What do you understand by elevation ? 2
- (b) Draw front elevation of Fig. 1. 7
- (c) Draw a side elevation of Fig. 1. 7
- (d) Draw a section of Fig. 1 at ABCC. 7

(5)

**Unit-IV**

Q. 4. (a) What do you understand by single line

plan ?

2

(b) Draw a single line plan of primary health

centre.

7

(c) Draw a single line plan of Hostel for 50

students.

7

(d) Draw a single line plan of school canteen. 7

**Unit-V**

Q. 5. (a) What is difference between panelled and

glazed shutter ? Explain.

2

**320454 (20)**

**P.T.O.**

(6)

(b) Explain half panelled and half glazed window

shutter with neat sketch.

7

(c) Draw an elevation with sectional plan of fully

panelled door shutter.

7

(d) What is perspective projection ? What are its

elements ? Explain them.

7

